

TECH CRUSADER

Tech Crusaders rose to prominence during the Great Galactic War. They are distinguished by their formidable Powertech armor. These Mandalorians carved out a legacy as the most technologically advanced warriors the galaxy has ever known. Vode who don this armor embody that legacy, embracing the heavy duty, high-tech edge of Mandalorian tradition.



SOFT PARTS

Soft costume elements from other eras are prohibited.

FLAK VEST & FLIGHT SUIT

- Fully "sealed" flight suit is required (no visible skin). A neck seal is required if the collar does not fully cover the neck.
- Flak vests are not required.
- Diaphragm must be reinforced with padding, stitching, ribbing, or paneling from the base of chest armor to the belt line.

BELT & AMMO POUCHES

- A Tech belt, and at least one of the following: Ammo belt or holster belt.
- Tech belt must appear metallic and visually complements the armor's color scheme.



Custom Tech Belt



TT-17A Tech Belt

- The addition of sashes, girth belts, and other waist items is allowed.

OTHER SOFT PARTS

- Full-fingered gloves are required.
- Capes and kamas are permitted.

HELMET

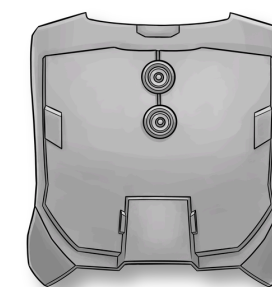
- Mandalorian helmet from Tech Crusader Era, or designed similarly.
- Full helmet with a "T", "Y", or "A" style visor.
- Key slots and Modern Era range-finders are prohibited.



"A" style visor

BACK COVERING

- Coverage in the form of a solid backplate.
- Connected to the chest as a part of the "clamshell" design.
- Capes, jetpacks and Tech Backpacks can be used in addition to but not in lieu of a backplate.



Custom back armor

GAUNTLETS

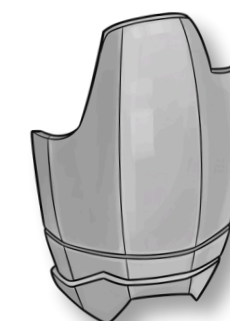
- Fully enclosed, clamshell style gauntlets.
- Gauntlets feature functional-looking details such as greeblies, attachment points, vents, hoses, or LED screens.
- Armored hand plates are optional.



Clamshell gauntlet

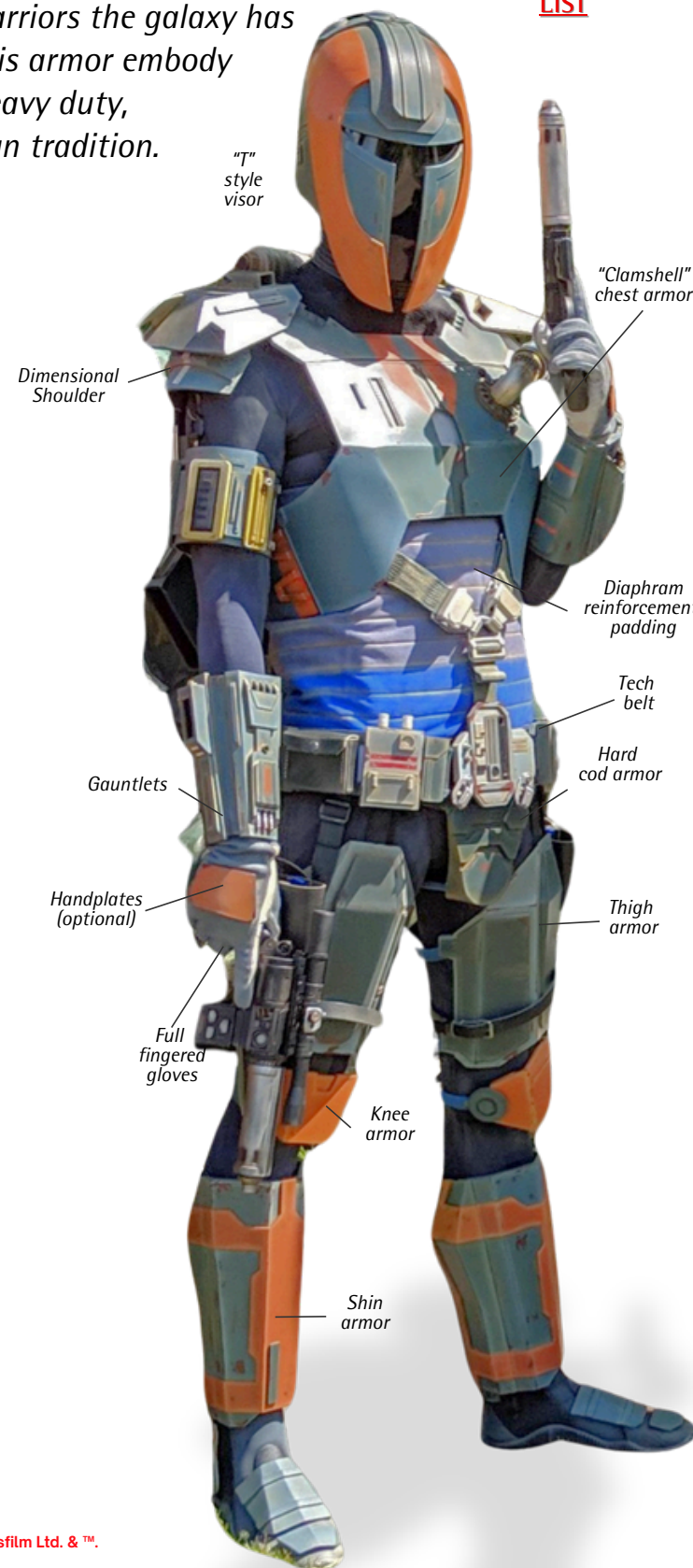
LOWER BODY

- The minimum requirements are: Cod coverage (soft or hard), thigh, shin, and knee armor.
- Full enclosure shin and thigh armor is encouraged.
- "Shnees" (knee + shin combo) are an acceptable variant for knees.



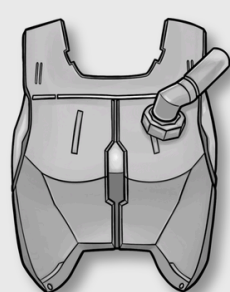
Thigh armor

HELMET LIST

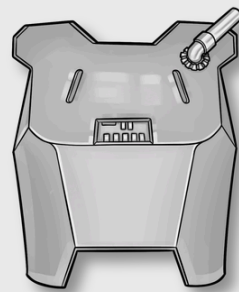


CHEST ARMOR

- Chest armor connects to backplate over the shoulders and under arms, forming clamshell-style armor.
- Features include greeblies, vents, hoses, LED screens, or attachment points.

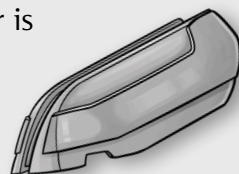


Custom



Custom

- Shoulder armor is large and geometric in shape.



Style is based on visuals from *Star Wars: The Old Republic [SWTOR]*; costume elements must reflect published references from this era.

Armor styles from other eras are prohibited.